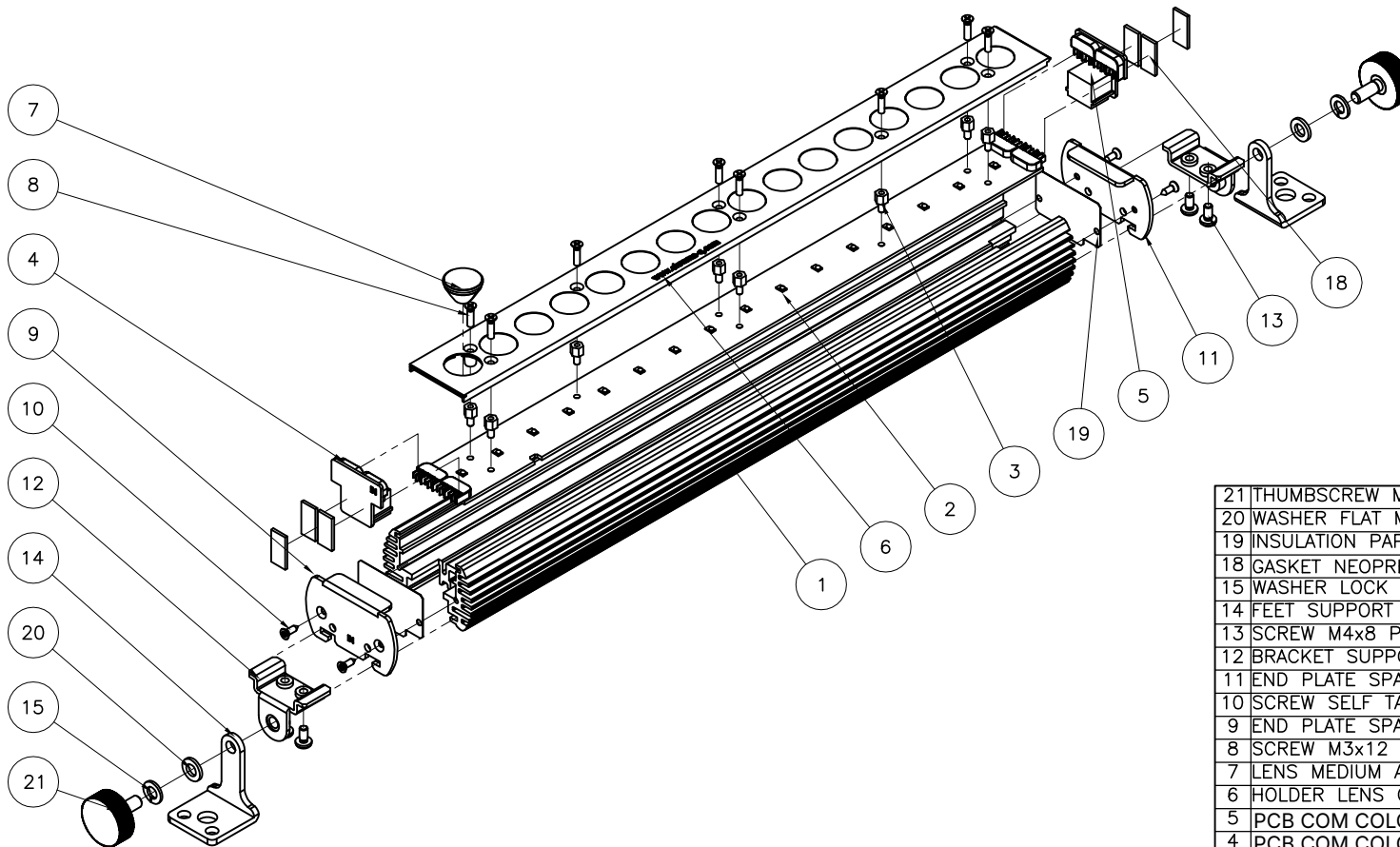


16" SPAN 2



DISCLAIMER: Dimensions and illustrative drawings contained herein are accurate to the company's knowledge at the time of printing, however specifications are subject to change without notice

| 21 | THUMBSCREW M6x16 BLACK 26mm DIA | 900-0129 | 2 |
|------------|-------------------------------------|------------|-----|
| 20 | WASHER FLAT M6 SS | 460-2112-2 | 2 |
| 19 | INSULATION PAPER | 633-0024 | 2 |
| 18 | GASKET NEOPRENE 1/8x3/8 PSA- 3/4" | 900-0663 | 6 |
| 15 | WASHER LOCK M6 SS | 460-2812-2 | 2 |
| 14 | FEET SUPPORT SPAN II | 633-0006 | 2 |
| 13 | SCREW M4x8 PH PLPS Zn | 440-1208-1 | 4 |
| 12 | BRACKET SUPPORT SPAN II | 633-0005 | 2 |
| 11 | END PLATE SPAN II - OUT | 633-0007 | 1 |
| 10 | SCREW SELF TAP FH PLPS ST2.9x9.5 SS | 430-6110-2 | 4 |
| 9 | END PLATE SPAN II - IN | 633-0004 | 1 |
| 8 | SCREW M3x12 FH PLPS BLK | 430-1112-0 | 8 |
| 7 | LENS MEDIUM ANGLE REBEL | 200-0002 | 16 |
| 6 | HOLDER LENS COLO SPAN Mk2 | 612-0050 | 1 |
| 5 | PCB COM COLOR SPAN OUT (+) | 633-0102 | 1 |
| 4 | PCB COM COLOR SPAN IN (+) | 633-0101 | 1 |
| 3 | STDOFF M3 NUTx5, SCREW M3x6 | 430-4105-1 | 8 |
| 2 | PCB COMLETE LEDS SPAN II | 622-0200 | 1 |
| 1 | EXTRUSION SPAN II 16" SILVER | 633-0016 | 1 |
| ITEM | DESCRIPTION | PART# | QTY |
| Parts List | | | |